

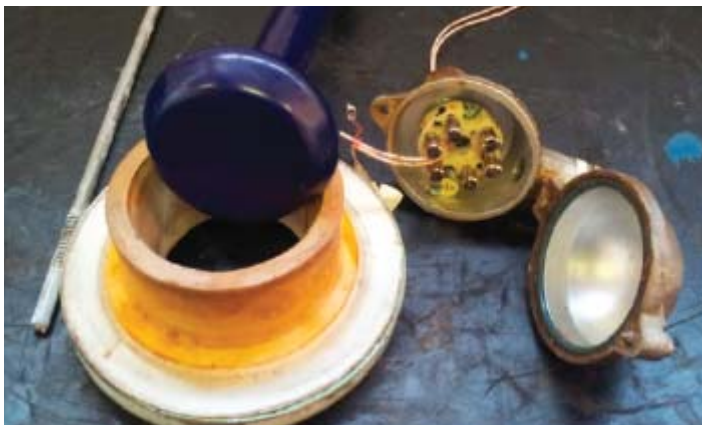
To extend the life of your valve and improve its functionality without having to purchase a new piece of equipment, De Dietrich Process Systems offers valve refurbishment services and conversion kits that can repair and upgrade your glass-lined flush valve. Depending on the design and condition of your existing valve as well as desired upgrades, DDPS offers the following options:

In-house Valve Refurbishment Services

Send in your worn or damaged valve to De Dietrich Process Systems' Corpus Christi, Texas facility where skilled technicians can bring new life to your existing valve. Valves are disassembled in our workshop to diagnose issues, then recommended repairs and renovations are made upon customer approval. After completion, the valve is reassembled and standard test procedures are conducted for quality assurance. Your valve is returned in a timely manner, minimizing shut-down time for your process. This service is available for any De Dietrich bottom outlet valve.

Advantages

- Extends life of valve
- Repairs and modernizes existing design
- Replaces damaged/worn parts
- Refurbishment handled with high expertise
- Quick turnaround time and low cost vs. purchasing a new valve
- Reduced corrective maintenance costs
- Operation after refurbishment equivalent to a new valve



Contact a De Dietrich Process Systems Aftermarket Sales Representative for additional technical information, pricing and delivery:

Valve Conversion Kits

This range of valve conversion kits allows you to upgrade your existing valve at a fraction of the cost of buying a new part. Kits are able to be installed onsite independently or with assistance from a trained DDPS field service technician. The enhancement options are as follows:

Option 1 - Standard Valve

If your valve uses a “red” actuator, this kit will upgrade the design to a “blue”, high pressure actuator. A stem link will not be provided, as installed valves using this kit would already have this feature.

Advantages

- Increases pressure rating with conversion from red to blue actuator.
 - Red: 10-15 PSI to open, rated for 30 PSI
 - Blue: 30 PSI to open, rated for 87 PSI
- Prevents premature cracking of valves in the field (most plant air is regulated at 30 PSI or higher).

Option 2 - Upgraded Valve

This kit will upgrade your actuator to the high pressure design (same as the Standard Valve Conversion Kit) in addition to replacing the stem link with a pneumatic coupling.

Advantages

- Enables the UniTip RTD temperature sensor to be removed and replaced while the valve is installed on the vessel (in-line replacement takes minutes vs. hours conventionally needed).
- Allows the pneumatic coupling from the Clean Valve design to be upgraded on existing VBS valves.

Option 3 - Pneumatic Coupling

Intended for customers who already have a high pressure valve, this kit upgrades the stem link design with a pneumatic coupling to enable quick temperature sensor changeout equivalent to the Clean Valve design.

Advantages

- Quick temperature sensor changeout minimizes process downtime and reduces labor.
- Kit can also be used as a replacement kit for customers who damage their existing pneumatic coupling.



Standard “red” actuator and high pressure “blue” actuator

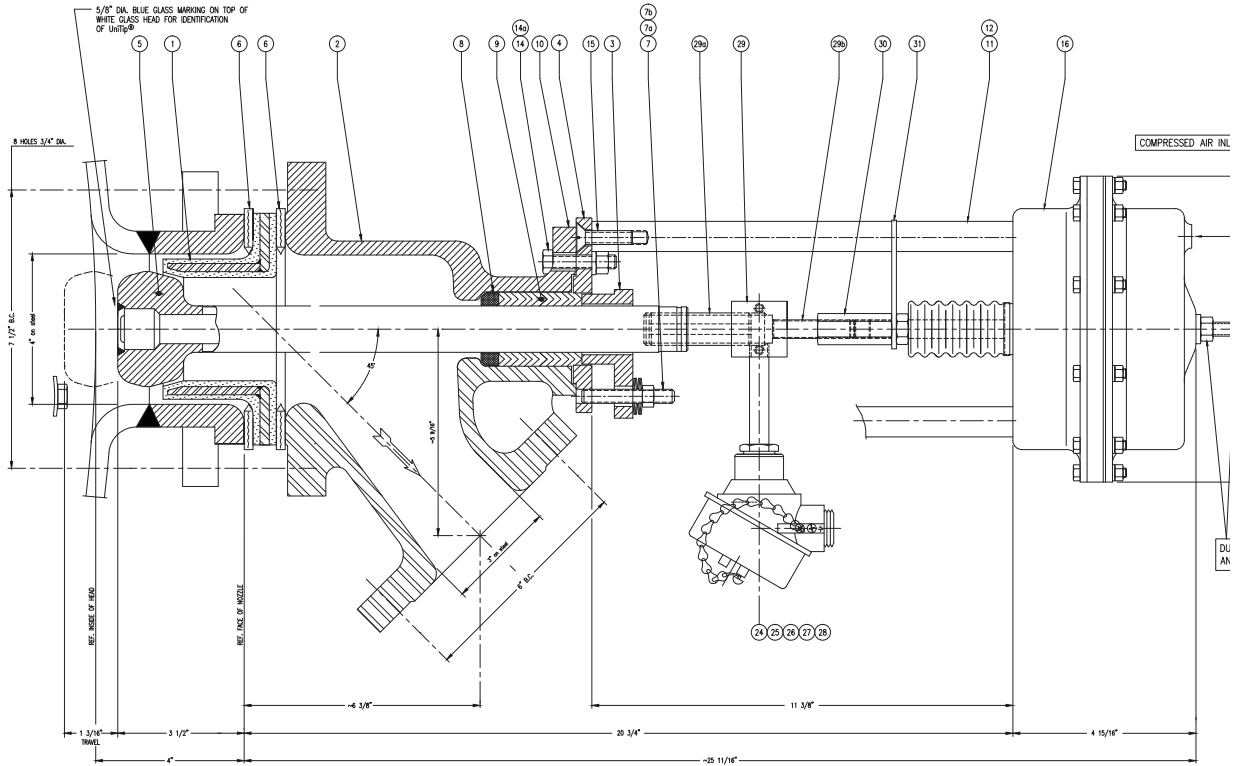


High pressure actuator with stem link

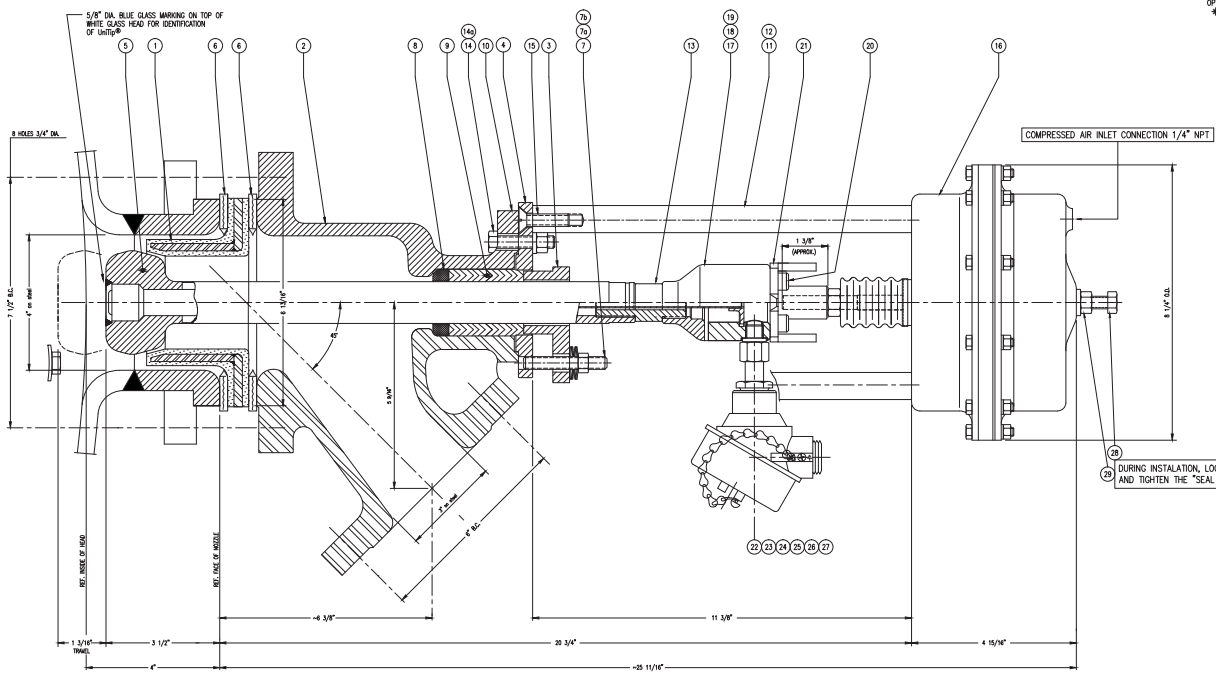


High pressure actuator with pneumatic coupling

Contact a De Dietrich Process Systems Aftermarket Sales Representative for additional technical information, pricing and delivery:



VBS Glass-Lined Flush Valve with Stem Link



VBS Glass-Lined Flush Valve with Pneumatic Coupling