



LIMIT SWITCH FOR BOTTOM OUTLET VALVES

Product Description

Limit switch for De Dietrich glass-lined bottom outlet valves features a Magnum (hermetically sealed proximity type) switch or MagPAC bifurcated switch pac.

- Aluminum Enclosure
- Shaft Output Namur
- Beacon BM2-Y
- Conduit Two 3/4" Female NPT
- Position Switch Two SPDT Magnum Switches – 8 pt. TS

Part Numbers:

3835.102 - limit switch

3835.103 - mounting bracket

Features and Benefits

- DT Transmitter Options:
 - Reference accuracy is three times that of traditional potentiometric analog sensors.
 - Non-contact means of position sensing helps yield higher accuracy over the life of the product.
- The MagPAC is designed for low power and non-resistive loads. The wiping and snap actions of the switch prevent oxide build-up and contact welding.
- Magnum limit switches with Rhodium contacts recommended for use with low power I/O's for longer contact life.
- The beacon is manufactured from a high impact strength and corrosion resistant co-polyester that offers 360 degree instant visual recognition of valve position from up to 150 feet away.
- Touch set cams are hand adjustable, spring loaded and self-locking, providing quick calibration of position sensors.
- Terminal strips are pre-wired and numbered with generous working space for ease of use.
- All units are standard with an additional conduit for easy field wiring and mounting accessories.
- Limit switch utilizes a standardized mounting pattern for easy adaptation to common bracketry.
- Low copper content aluminum enclosures (0.2% maximum copper content) ensure robust performance in corrosive environments.
- Captive screws on cover prevent lost screws during installation and maintenance.



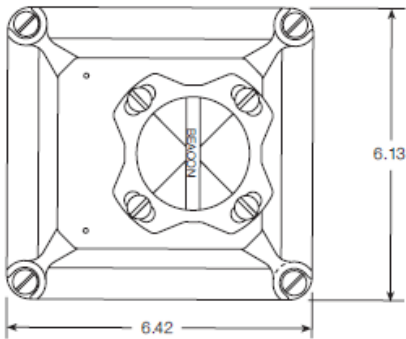
Agency Approvals

Class I, Division 1, Groups C & D/ T6 Ta = 60 Deg C

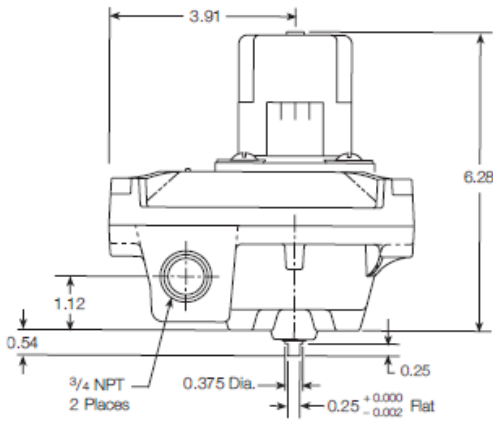
Class I, Division 2, Groups A, B, C & D/ T4 Ta = 60 Deg C

Class II, Division 1, Groups E, F & G/ T6 Ta = 60 Deg C

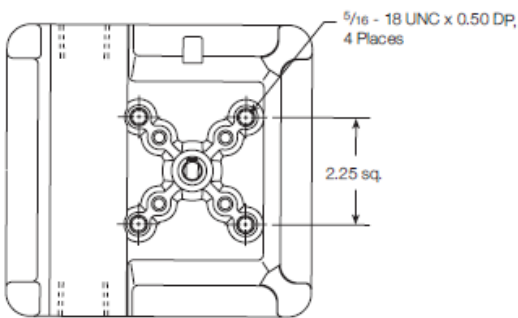
Top View



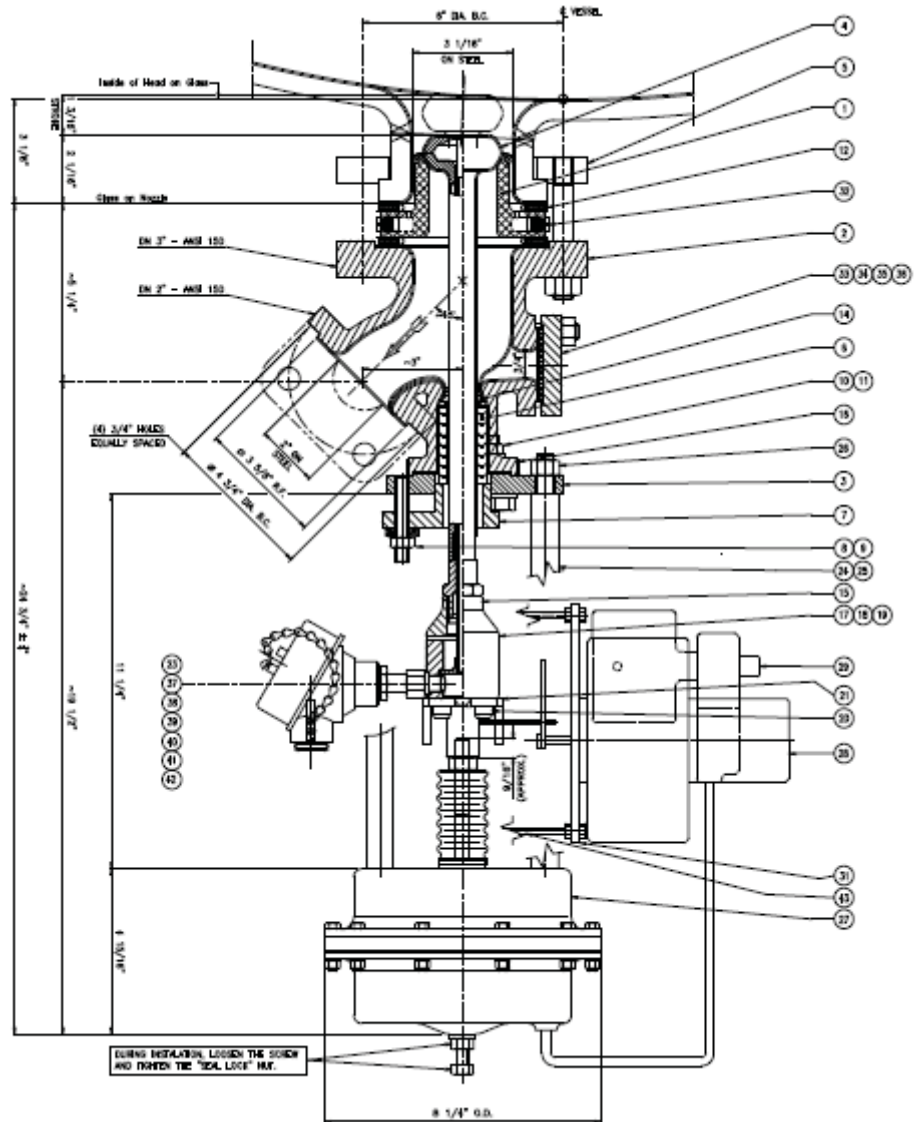
Side View



Bottom View



Technical Drawing of Valve with Installed Limit Switch



NAMUR Shaft

