

SR-SERIES CONICAL DRYER BLENDER

drying technology

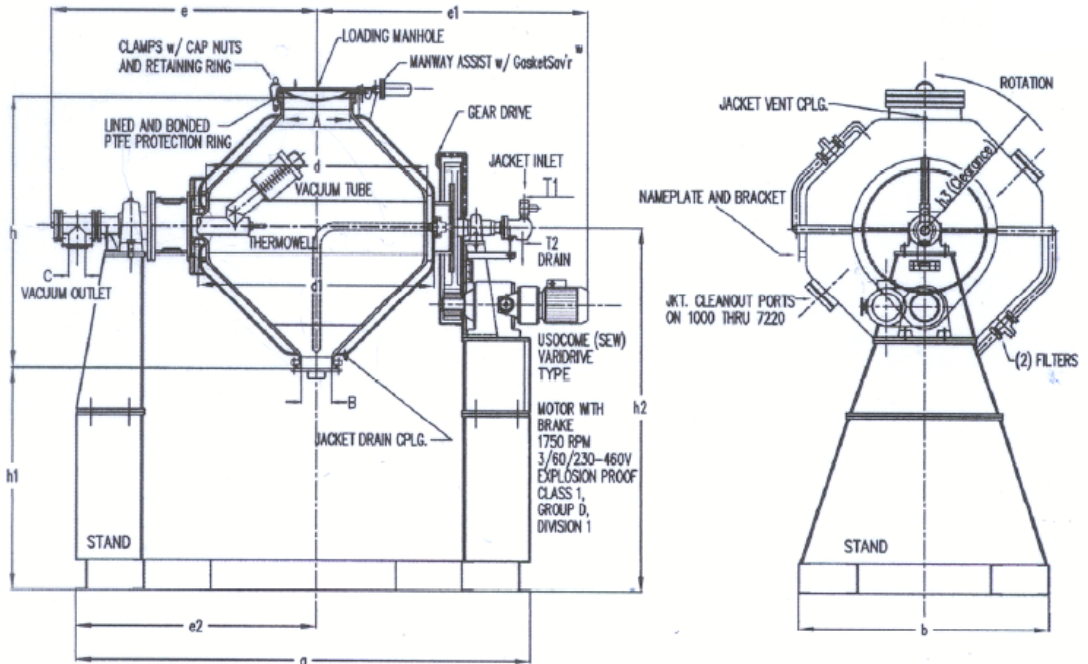
Design Limits

Vessel: 40
psig/FV @ -20
to 250°F

Jacket: 90
psig/FV @ -20
to 400°F

Working Volume

60-70% of total
capacity,
depending on
product



Type	SR-100	SR-400	SR-1000	SR-1600	SR-3030	SR-6300	SR-7220	
Total Capacity [gal]	31.7	125.5	274.7	429.3	800	1717	1906	
Jacket Capacity [gal]	14.5	16	52.8	78	147	250	264	
Heating Area [ft ²]	12.5	30	52	72	114	192	203	
Overall Dimensions	a	70-5/8"	92-3/4"	106-1/2"	121-1/2"	133-1/4"	169-3/8"	169-3/8"
	b	35-1/2"	47-1/4"	59-1/16"	67"	78-3/4"	102-3/8"	102-3/8"
	d	23-5/8"	39-3/8"	51-3/16"	59-1/16"	70-7/8"	94-1/2"	94-1/2"
	d1	27-1/2"	43-3/8"	55-1/8"	63"	74-13/16"	100-3/8"	100-3/8"
	e	46-5/8"	54-3/8"	64"	70-7/8"	76-3/8"	94-1/8"	94-3/32"
	e1	Dimension can not be standardized based on varying motor dimensions.						
	e2	38-9/16"	49-5/8"	56-1/2"	64-1/8"	70-1/32"	87-3/32"	87-3/32"
	h	30-3/8"	47-7/8"	60-29/32"	71-3/8"	91-1/2"	115"	120-1/2"
	h1	34-1/2"	50-23/32"	52-1/4"	58-7/8"	54-5/8"	62-1/4"	59-7/8"
	h2	51-3/16"	76-3/4"	84-5/8"	96-1/2"	102-3/8"	122-1/16"	122-1/16"
Nozzles: ANSI 150# [B,C]	A	12"	18"	18"	18"	20"	20"	
	B	6"	6"	8"	8"	8"	10"	10"
	C	2"	2"	3"	4"	4"	5"	5"
Connection for Heating Medium	T1	1" NPT	1" NPT	1" NPT	1.25" NPT	1.25" NPT	1.25" NPT	1.25" NPT
	T2	1.5" NPT	1.5" NPT	1.5" NPT	2" NPT	2" NPT	2.5" NPT	2.5" NPT
Motor Power [Hp]	2	3	5	5	7.5	20	20	
Speed Variation [RPM]	5 to 28	5 to 28	3 to 18	1.5 to 9	1.5 to 6.7	1.2 to 6.3	1.4 to 6.5	
Total Weight [lb]	4,185	4,620	7,275	9,480	13,445	24,250	25,580	

De Dietrich
PROCESS SYSTEMS



De Dietrich

244 SHEFFIELD STREET
MOUNTAINSIDE NJ 07092
FAX 908-889-4960

908-317-2585
WWW.DDPSINC.COM
EMAIL SALES@DDPSINC.COM

9110 FORSYTH PARK DRIVE
CHARLOTTE NC 28273
FAX 908-889 4960

ROSENMUND

